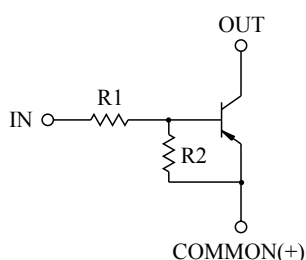


SWITCHING APPLICATION.  
INTERFACE CIRCUIT AND DRIVER CIRCUIT APPLICATION.

### FEATURES

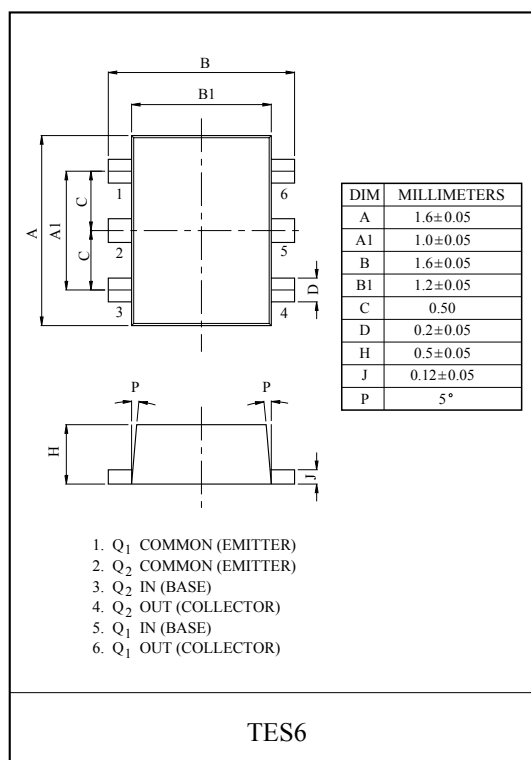
- With Built-in Bias Resistors.
- Simplify Circuit Design.
- Reduce a Quantity of Parts and Manufacturing Process.
- High Packing Density.

### EQUIVALENT CIRCUIT

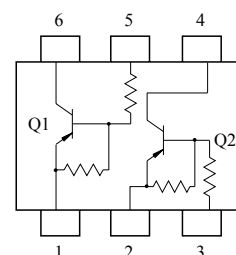


### BIAS RESISTOR VALUES

TYPE NO.	R1(k $\Omega$ )	R2(k $\Omega$ )
KRA721E	4.7	4.7
KRA722E	10	10
KRA723E	22	22
KRA724E	47	47
KRA725E	2.2	47
KRA726E	4.7	47



### EQUIVALENT CIRCUIT (TOP VIEW)



### MAXIMUM RATING (Ta=25°C)

CHARACTERISTIC		SYMBOL	RATING	UNIT
Output Voltage	KRA721E ~ 726E	V <sub>O</sub>	-50	V
Input Voltage	KRA721E	V <sub>I</sub>	-20, 10	V
	KRA722E		-30, 10	
	KRA723E		-40, 10	
	KRA724E		-40, 10	
	KRA725E		-12, 5	
	KRA726E		-20, 5	
Output Current	KRA721E ~ 726E	I <sub>O</sub>	-100	mA
Power Dissipation		P <sub>D</sub> *	200	mW
Junction Temperature		T <sub>j</sub>	150	°C
Storage Temperature Range		T <sub>stg</sub>	-55 ~ 150	°C

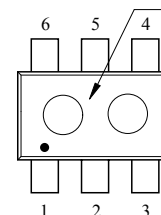
\* Total Rating.

### MARK SPEC

TYPE	KRA721E	KRA722E	KRA723E	KRA724E	KRA725E	KRA726E
MARK	JA	JB	JC	JD	JE	JF

### Marking

### Type Name



# KRA721E~KRA726E

## ELECTRICAL CHARACTERISTICS (Ta=25℃)

CHARACTERISTIC		SYMBOL	TEST CONDITION	MIN.	TYP.	MAX.	UNIT
Output Cut-off Current	KRA721E ~ 726E	$I_{O(OFF)}$	$V_O=-50V, V_I=0$	-	-	-500	nA
DC Current Gain	KRA721E	$G_I$	$V_O=-5V, I_O=-10mA$	30	55	-	
	KRA722E			50	80	-	
	KRA723E			70	120	-	
	KRA724E			80	200	-	
	KRA725E			80	200	-	
	KRA726E			80	200	-	
Output Voltage	KRA721E ~ 726E	$V_{O(ON)}$	$I_O=-10mA, I_I=-0.5mA$	-	-0.1	-0.3	V
Input Voltage (ON)	KRA721E	$V_{I(ON)}$	$V_O=-0.2V, I_O=-5mA$	-	-1.5	-2.0	V
	KRA722E			-	-1.8	-2.4	
	KRA723E			-	-2.1	-3.0	
	KRA724E			-	-2.8	-5.0	
	KRA725E			-	-0.8	-1.1	
	KRA726E			-	-0.9	-1.3	
Input Voltage (OFF)	KRA721E ~ 724E	$V_{I(OFF)}$	$V_O=-5V, I_O=-0.1mA$	-1.0	-1.2	-	V
	KRA725E ~ 726E			-0.5	-0.65	-	
Transition Frequency	KRA721E ~ 726E	$f_T^*$	$V_O=-10V, I_O=-5mA$	-	200	-	MHz
Input Current	KRA721E	$I_I$	$V_I=-5V$	-	-	-1.8	mA
	KRA722E			-	-	-0.88	
	KRA723E			-	-	-0.36	
	KRA724E			-	-	-0.18	
	KRA725E			-	-	-3.6	
	KRA726E			-	-	-1.8	

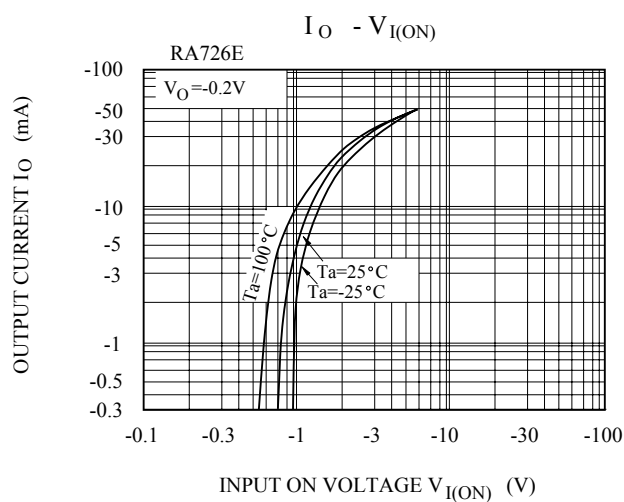
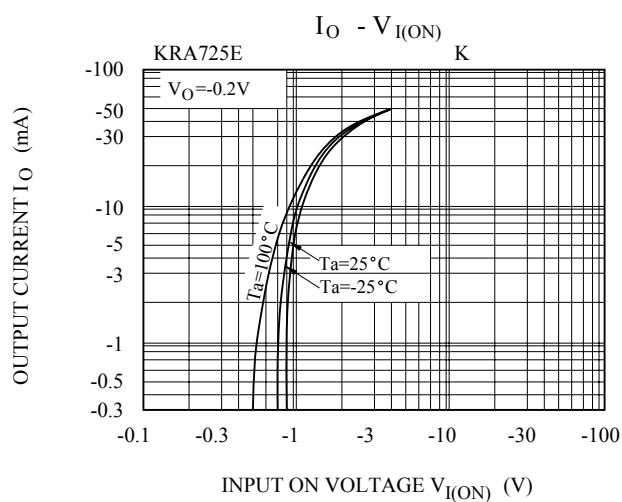
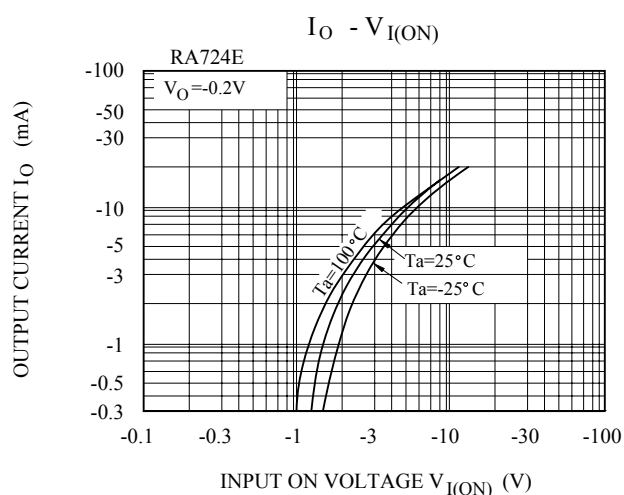
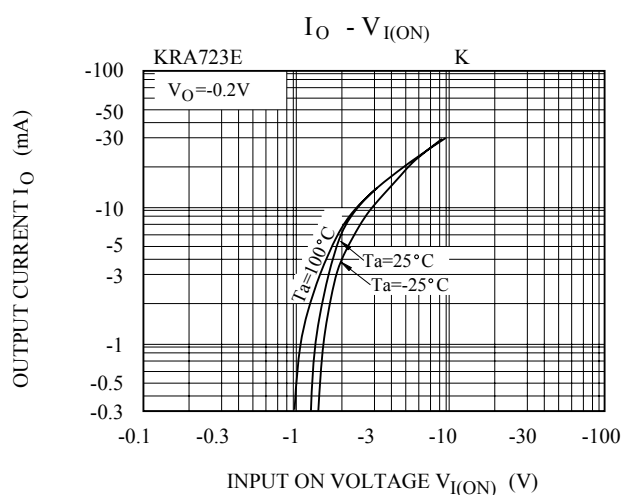
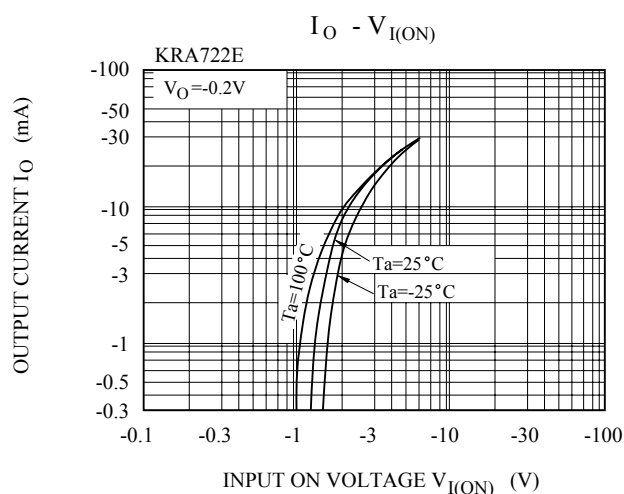
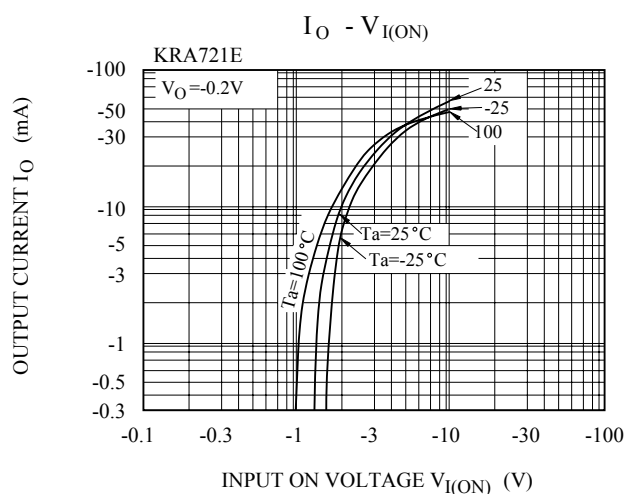
Note : \* Characteristic of Transistor Only.

# KRA721E~KRA726E

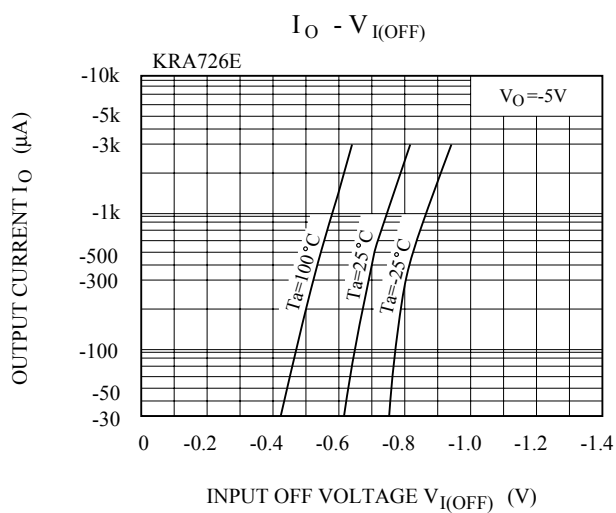
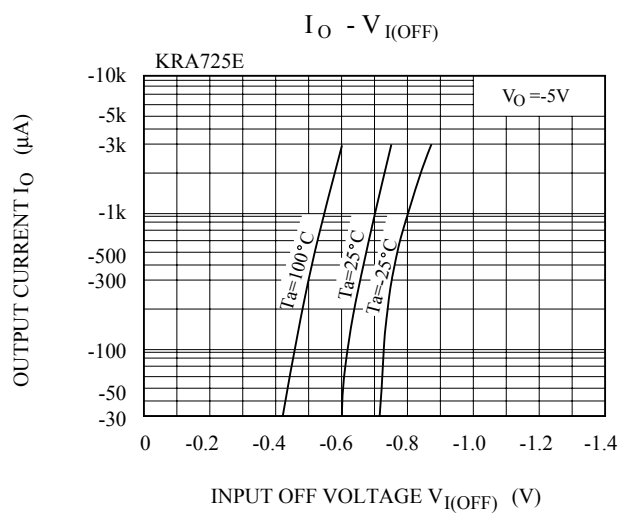
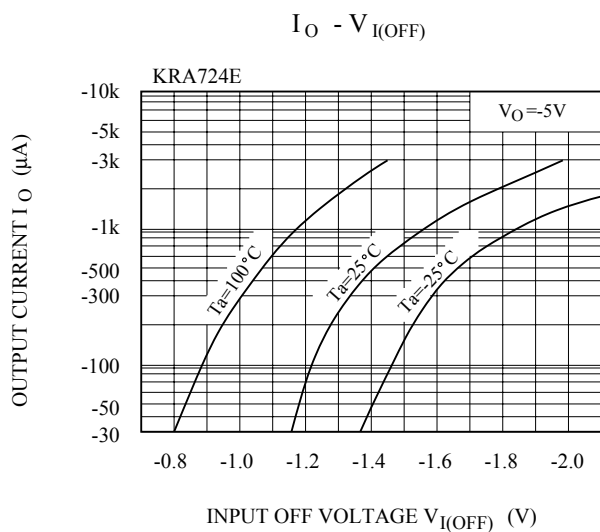
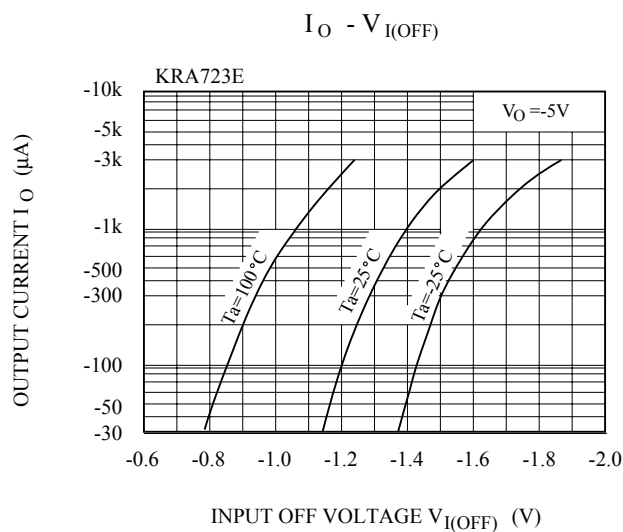
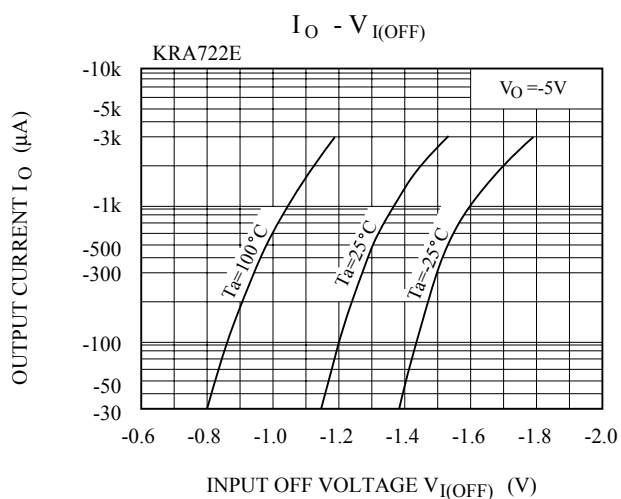
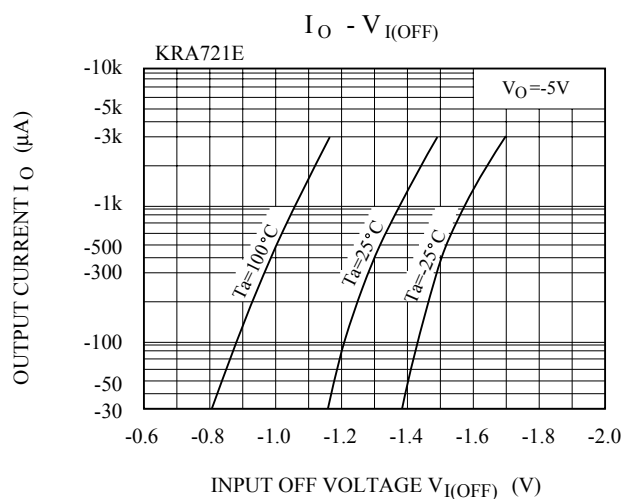
## ELECTRICAL CHARACTERISTICS (Ta=25℃)

CHARACTERISTIC			SYMBOL	TEST CONDITION	MIN.	TYP.	MAX.	UNIT
Switching Time	Rise Time	KRA721E	t <sub>r</sub>	V <sub>O</sub> =-5V V <sub>IN</sub> =-5V R <sub>L</sub> =1kΩ	-	0.07	-	μS
		KRA722E			-	0.06	-	
		KRA723E			-	0.2	-	
		KRA724E			-	0.24	-	
		KRA725E			-	0.02	-	
		KRA726E			-	0.07	-	
	Storage Time	KRA721E	t <sub>stg</sub>		-	1.1	-	
		KRA722E			-	1.1	-	
		KRA723E			-	1.1	-	
		KRA724E			-	1.1	-	
		KRA725E			-	1.1	-	
		KRA726E			-	1.1	-	
	Fall Time	KRA721E	t <sub>f</sub>		-	0.15	-	
		KRA722E			-	0.24	-	
		KRA723E			-	0.38	-	
		KRA724E			-	0.63	-	
		KRA725E			-	0.1	-	
		KRA726E			-	0.2	-	

# KRA721E~KRA726E



# KRA721E~KRA726E



# KRA721E~KRA726E

